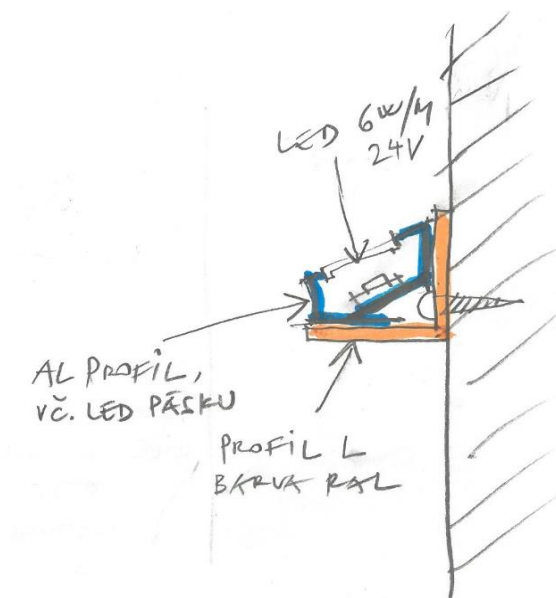


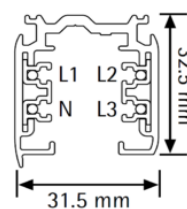
Číslo : 20/2024
 Název akce : osvětlení víceúčelové budovy "Linserka"
 Místo : Liberec
 Investor : Statutární město Liberec
 Projektant : ATELIER_JAROSLAV, ing. arch. Vojtěch Jan Stoklasa
 Vypracoval : ATEH spol. s r.o., Trtílkova 22, 612 00 Brno, ateh@ateh.eu

L1.1 - L1.10 Osvětlovací lišta

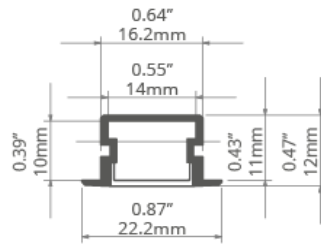


skica průřezu lišty

L2



L3.1 - L3.4



S1



Reflektor-Ø
260 mm

Glas-Ø / Leuchtenhöhe mit Glas
100 mm / 200 mm (max. 60 Watt)

nebo varianta - místo černé barvy přírodní ocel

S2



S3



S4

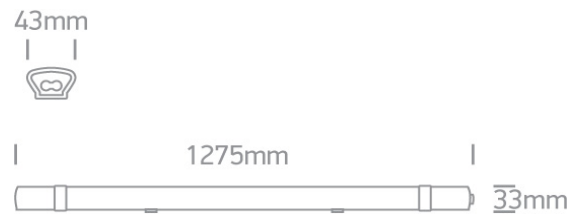


58 x 60 x 600 mm

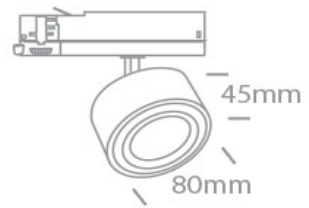
S5



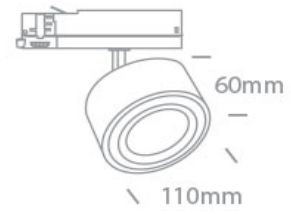
S6



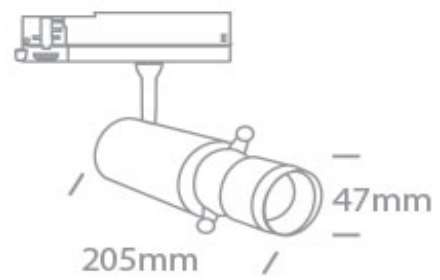
S7



S8



S9



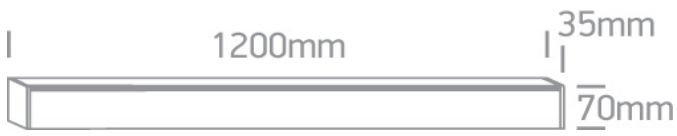
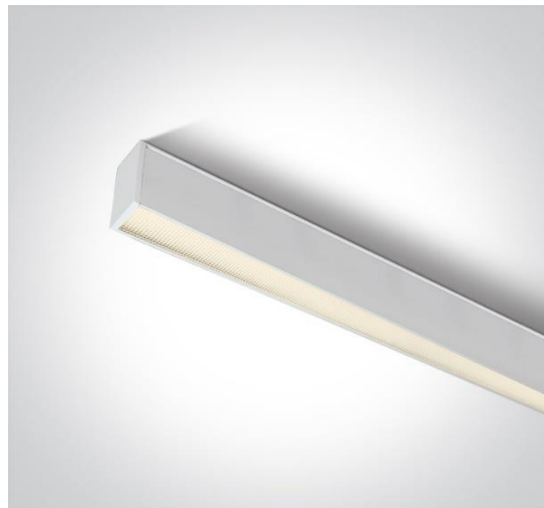
S10



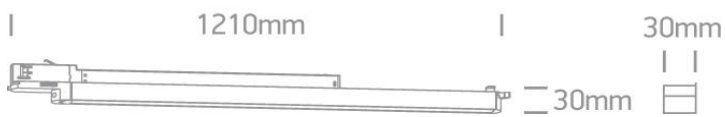
Reflektor-Ø / Leuchtenhöhe
300 mm / 210 mm

nebo varianta - místo černé barvy přírodní ocel

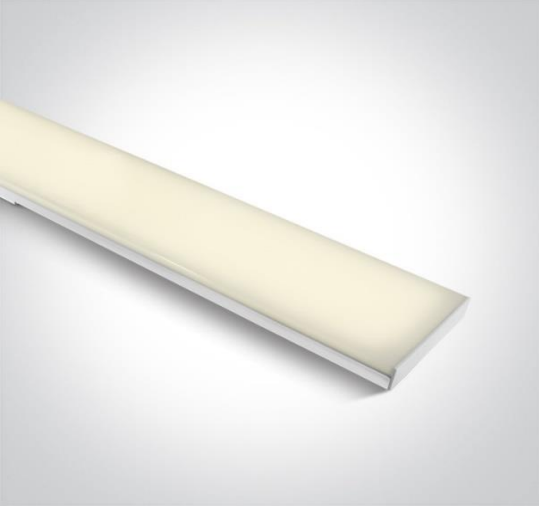
S11



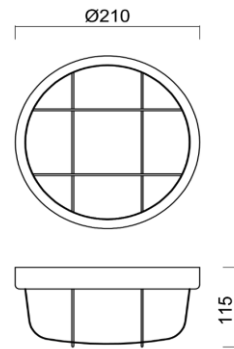
S12



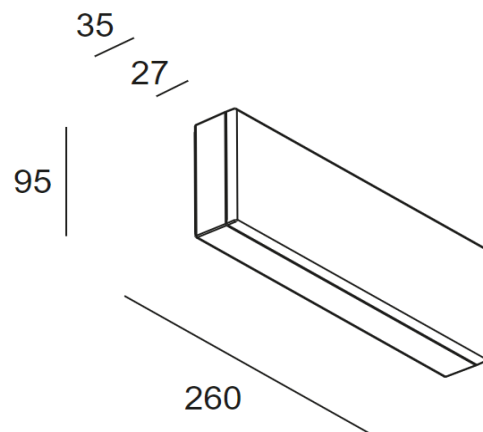
S13



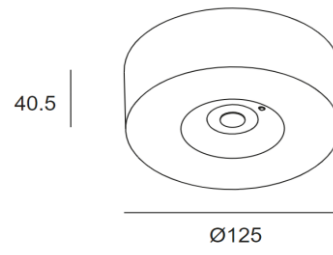
S14



SN1



SN2



SN3

